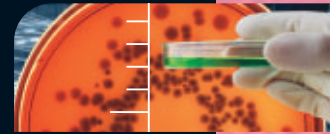


PROTOCOL 2 ACCESSORIES

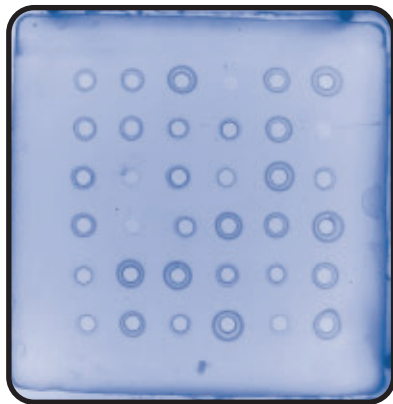


To extend the capability of **ProtoCOL 2** to work with larger size samples and fluorescent samples a number of bolt-on accessories are available. Each of these can be directly connected to the **ProtoCOL 2** using one of the USB ports and is controlled by the **ProtoCOL 2** software. Alternatively, each accessory can be connected to any separate laptop or desktop PC and is controlled using a stand-alone version of the **ProtoCOL 2** software.

ProcScan

ProtoCOL 2 can easily accommodate plates of up to 100 x 100mm. When larger plates are used, simply add the ProcScan scanner which can work with plates of up to 300 x 300mm. Images of these plates are scanned directly into the **ProtoCOL 2**.

Large format plates such as SRD with large grid arrays can easily be scanned and imaged with ProcScan. Images are then analysed using the **ProtoCOL 2** software.



Scan area	Up to 310 x 437mm
Scanner	Colour
Resolution	Up to 2400 dpi
Speed	30 x 30cm in less than 1 minute
Connectivity	USB 2.0

ProcMacro

ProtoCOL 2 can work with circular plates up to 100mm diameter. For plates of up to 150mm, the ProcMacro is used in conjunction with the **ProtoCOL 2** to capture images.

The ProcMacro uses a high resolution external colour camera. The assembly has both transmitted light and overhead illumination so that any type of plate can be viewed and an image captured using optimum lighting conditions.

Camera exposure and image capture is controlled by the **ProtoCOL 2** software. Once images are captured the **ProtoCOL 2** software can then perform the analysis/count.



ProcUV

ProcUV images fluorescent colonies with ease.

This stand alone darkroom features a 1.4m colour camera and internal UV lighting.

Plates are placed inside the darkroom where the fluorescent colonies are excited by the UV illumination. The darkroom/camera is connected to the **ProtoCOL 2** using the firewire port. Images are then imported into the **ProtoCOL 2** software where they can be analysed/counted.

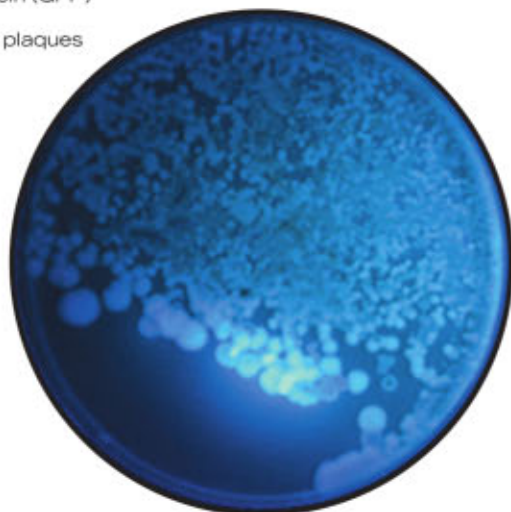
ProcUV offers you:

- High resolution 1.4m pixel camera
- Easy to control manual zoom lens
- Filter drawer for a range of fluorescent filters
- Large sliding door for safe, easy access
- Built-in white light

How you can use a ProcUV

You can use ProcUV for viewing and generating images of the following:

- Dark, light or multi-coloured colonies
- Fluorescent colonies
- Colonies expressing Green Fluorescent Protein (GFP)
- Viral plaques



Features

Automated colony counting and zone measuring

Imaging by white or UV illumination

Filter drawer with optional interchangeable filters

Universal darkroom

Benefits

Saves hours and improves result accuracy

Cost-effective, multi-application use

Easy to upgrade for different fluorescent applications

Flexible as can accommodate large or small plates

Products are subject to change without prior notification



Synbiosis Europe and International Headquarters:
Beacon House Nuffield Road Cambridge
CB4 1TF UK
Tel: +44 (0)1223 727125 Fax: +44 (0)1223 727101
email: sales@synbiosis.com

Synbiosis USA Headquarters:
5108 Pegasus Court Suite M Frederick
MD 21704 USA
Tel: 800-686-4451/301-662-2863 Fax: 301-631-3977
email: ussales@synbiosis.com

Website: www.synbiosis.com

A.010.10.09
All trademarks acknowledged